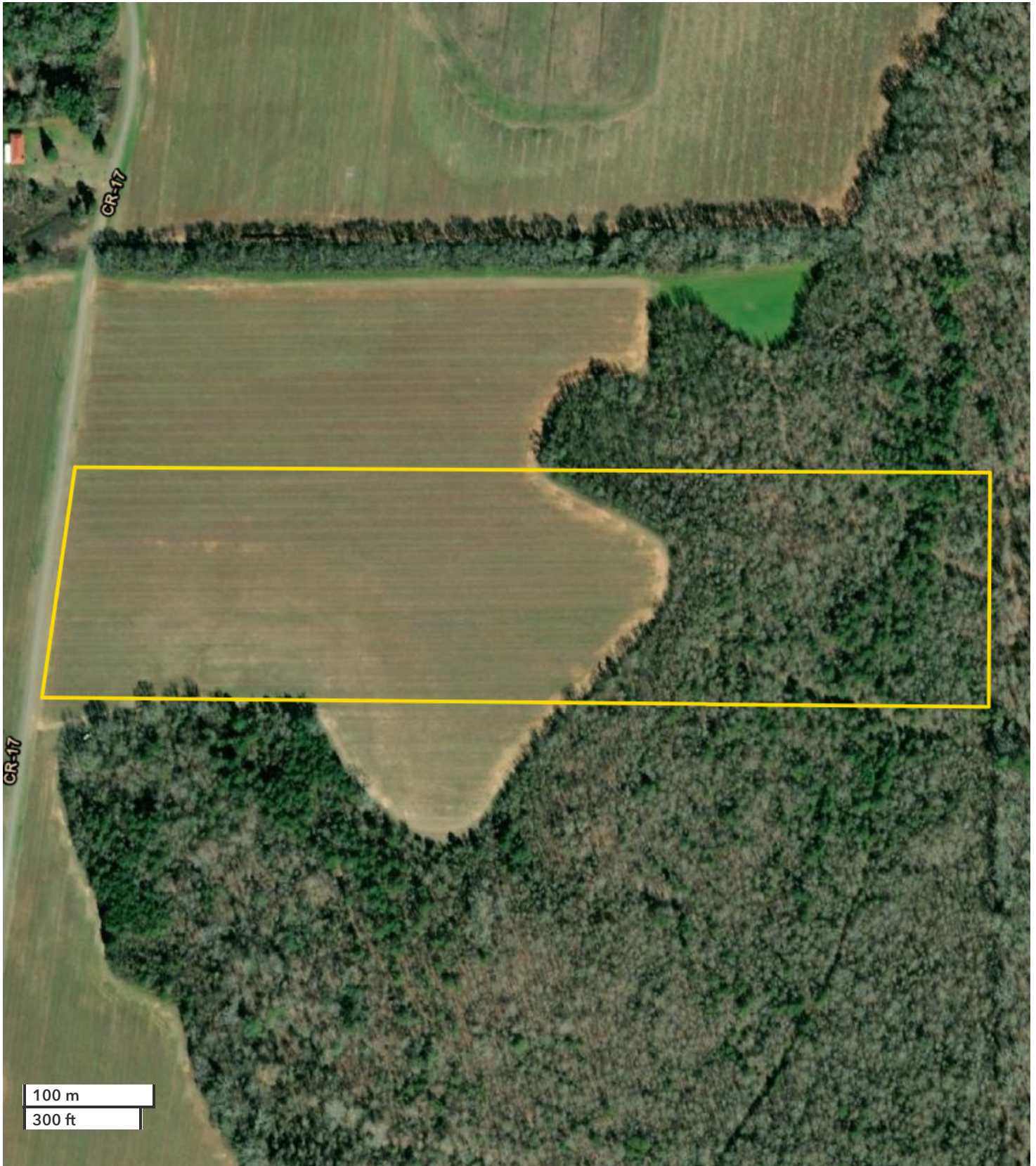




JERRY JOE JR. INGRAM
Partner
864-331-1610
jingram@nationalland.com
334-300-4273
334-300-4273

Autaugaville Farm, Hunting Tract, and Timber Production
Autauga County, AL
30 +/- Acres



All boundary lines noted in pictures, aerials or maps should be considered estimates and not relied on as legal documents or descriptions.