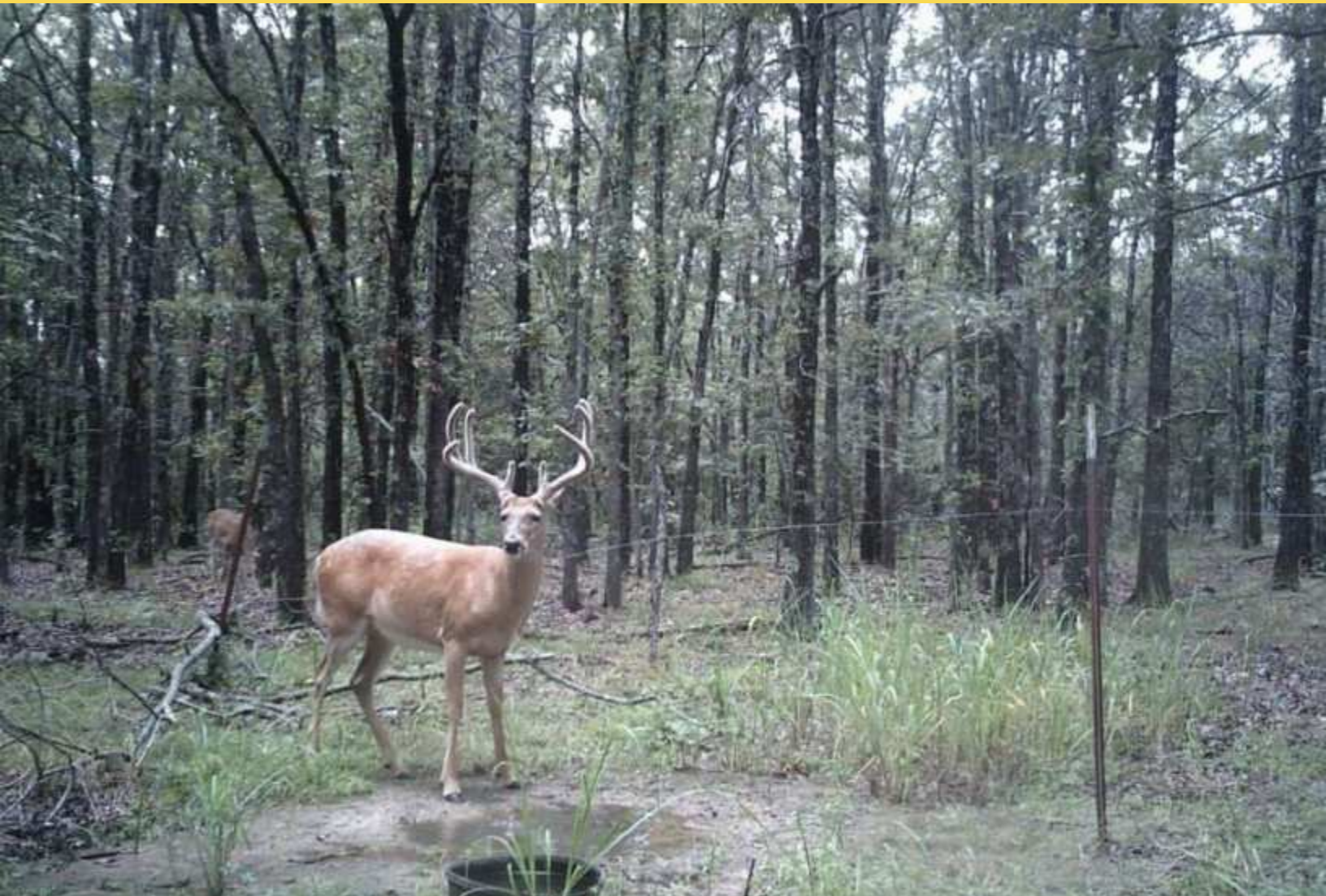


NEW



## Hunting Land Near Spring Creek

25 +/- Acres (\$6,000/acre) | Mayes County, OK | \$150,000



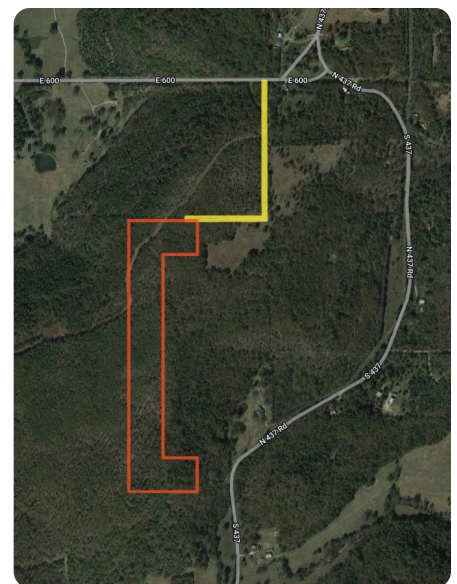
**National Land Realty**  
4915 South Newport Avenue  
Tulsa, OK 74105  
[NationalLand.com](http://NationalLand.com)



**Debbie Durkee, ALC, CRS**  
Office: 855-384-5263  
Cell: 918-724-8201  
Fax: 864-331-1610  
[ddurkee@nationalland.com](mailto:ddurkee@nationalland.com)

The above information is from sources deemed reliable, however the accuracy is not guaranteed.  
National Land Realty assumes no liability for error, omissions or investment results.

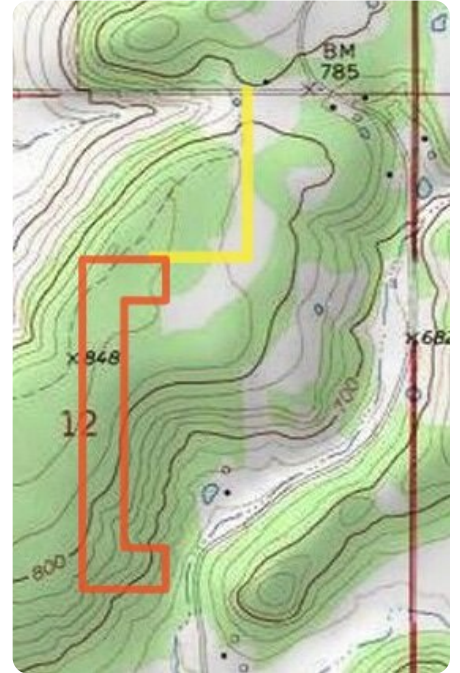




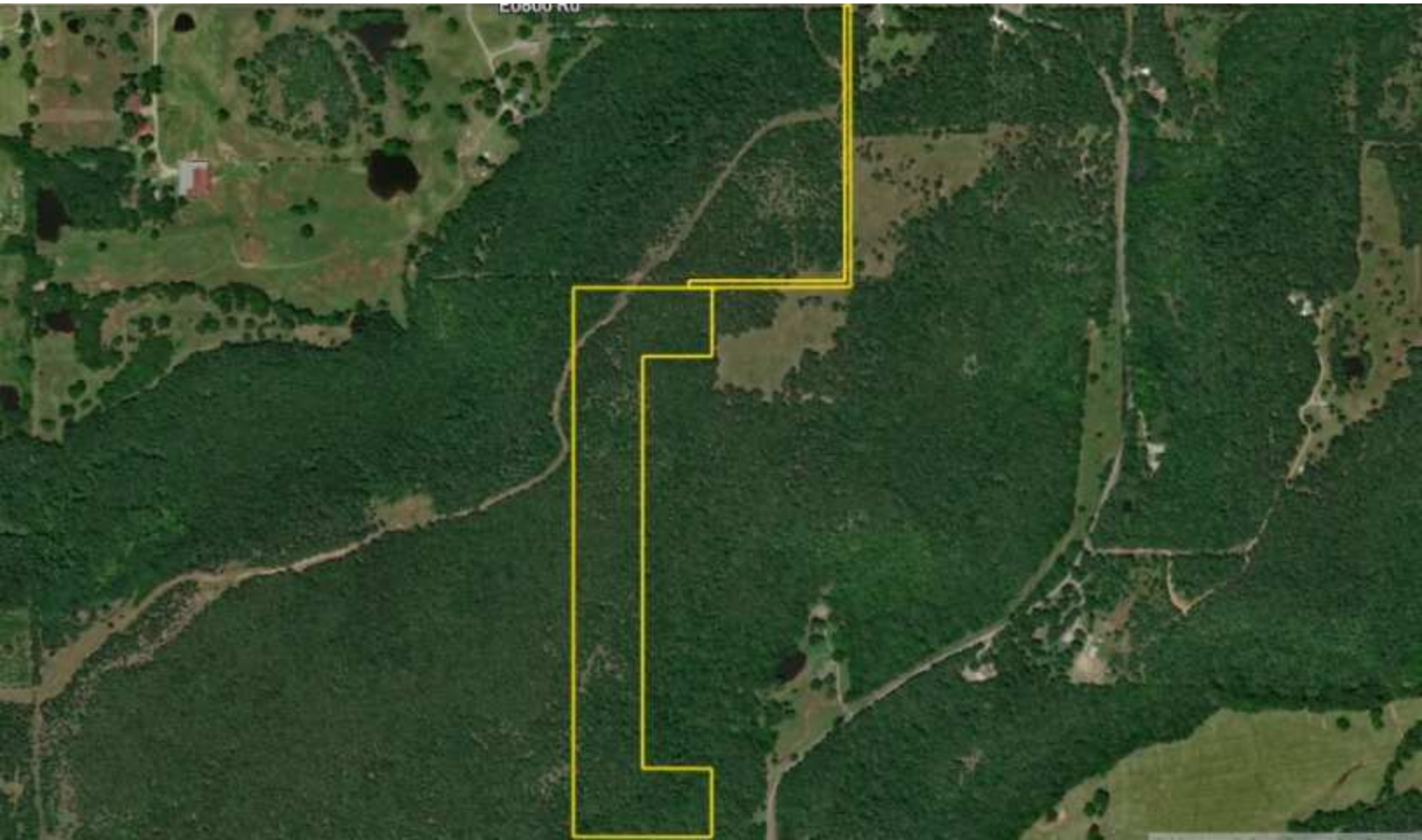


## PROPERTY HIGHLIGHTS

- White-tail deer, turkey, and squirrels in a remote part of Mayes County.
- 25 acres m/l of undeveloped wooded land along the top of a ridge.
- Great fishing nearby on Spring Creek & Grand River near Murphy
- Located 45 minutes east of Tulsa via U.S. Highway 412.
- 25 foot easement to property
- Public boat ramps nearby at Spring Creek Recreation Area and at Grand River.
- Walkable woods with little undergrowth
- No zoning or deed restrictions. Mobile homes allowed.
- Several building sites with great views
- You could build a house at the south end of the property overlooking farmland in a long valley that leads to Spring Creek. Or you could build a house at the northwest corner and have a fabulous view of farmland in the valley to the west.
- Mayes County Water District No. 7 rural water line runs east-west on the neighbor's land parallel to the north boundary of the subject property.
- 



[nationalland.com/listing/hunting-land-near-spring-creek](https://nationalland.com/listing/hunting-land-near-spring-creek)







**National Land Realty**  
 4915 South Newport Avenue  
 Tulsa, OK 74105  
[NationalLand.com](http://NationalLand.com)



**Debbie Durkee, ALC, CRS**  
 Office: 855-384-5263  
 Cell: 918-724-8201  
 Fax: 864-331-1610  
[ddurkee@nationalland.com](mailto:ddurkee@nationalland.com)

The above information is from sources deemed reliable, however the accuracy is not guaranteed.  
 National Land Realty assumes no liability for error, omissions or investment results.





**National Land Realty**  
4915 South Newport Avenue  
Tulsa, OK 74105  
[NationalLand.com](http://NationalLand.com)



**Debbie Durkee, ALC, CRS**  
Office: 855-384-5263  
Cell: 918-724-8201  
Fax: 864-331-1610  
[ddurkee@nationalland.com](mailto:ddurkee@nationalland.com)

The above information is from sources deemed reliable, however the accuracy is not guaranteed.  
National Land Realty assumes no liability for error, omissions or investment results.





**National Land Realty**  
4915 South Newport Avenue  
Tulsa, OK 74105  
[NationalLand.com](http://NationalLand.com)



**Debbie Durkee, ALC, CRS**  
Office: 855-384-5263  
Cell: 918-724-8201  
Fax: 864-331-1610  
[ddurkee@nationalland.com](mailto:ddurkee@nationalland.com)

The above information is from sources deemed reliable, however the accuracy is not guaranteed.  
National Land Realty assumes no liability for error, omissions or investment results.



The above information is from sources deemed reliable, however the accuracy is not guaranteed.  
National Land Realty assumes no liability for error, omissions or investment results.