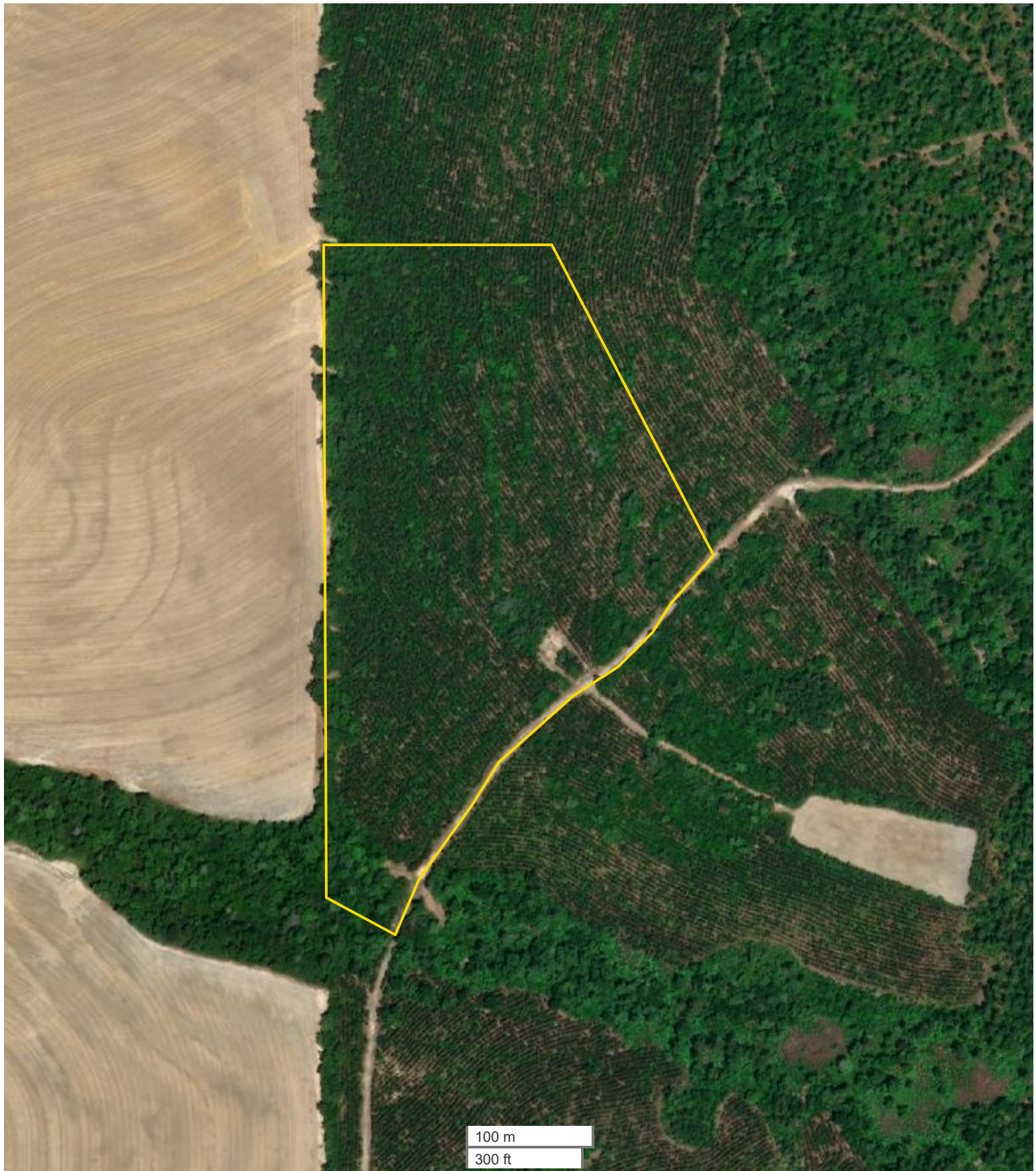




TOM LEATHERBURY, JR.
Land Professional
Cell: 251-422-5643
Office: 855-657-5263
Fax: 888-672-1810
Tleatherbury@nationallandrealty

CLINT FLOWERS, ALC
Partner
Cell: 251-387-0787
Office: 855-657-5263
Fax: 888-672-1810
cflowers@nationalland.com

Persimmon Creek Estates Homesite with
Baldwin County, AL
28 +/- Acres



All boundary lines noted in pictures, aerals or maps should be considered estimates and not relied on as legal documents or descriptions.