

**RIDGEVILLE BLUFF  
FARM AND HOMESITE**

**47.8 +/- Acres  
Berkeley County, SC  
\$950,000**

**NEW LISTING**

**NATIONAL  
LAND  
REALTY®**



**NATIONAL  
LAND  
REALTY®**

**National Land Realty**  
669 Marina Drive  
Ste B-4  
Charleston, SC 29492  
[www.NationalLand.com](http://www.NationalLand.com)



**Gregory Greer**  
Office: 855.384.5263  
Cell: 843.754.3064  
Fax: 864.331.1610  
[Ggreer@nationalland.com](mailto:Ggreer@nationalland.com)

The information herein is from sources deemed reliable, however the accuracy is not guaranteed.  
National Land Realty assumes no liability for error, omissions or investment results.



**OVERVIEW:**

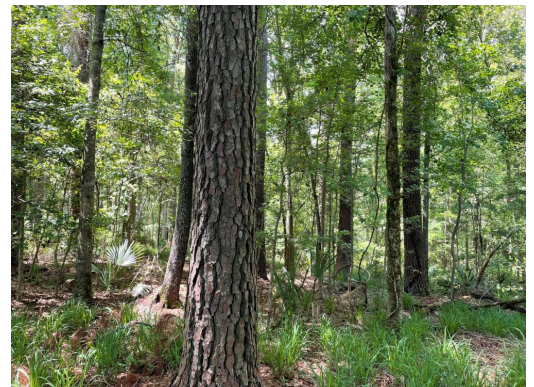
The Ridgeville Bluff Farm is an excellent homesite with space to spare for hunting, farming, and recreation. Create your very own estate with this property bordering the 18,000+ acre Audubon Beidler Forest that is permanently protected. This high field sits on a legitimate bluff overlooking the Four Hole Swamp. The rare topography for this close to the coast and the Lowcountry with an over 40 foot drop in the woods. Old growth hardwoods combined with open tillable field make this the perfect property for equestrian or wide open space to make home. All of this is only 15 minutes to Summerville and 40 minutes to downtown Charleston. The seller has two DHEC perk sites approved and has improved the driveway with all-weather rock.

**PARCEL #/ID:** 115-00-00-016**TAXES:** (Call Agent for Details)**ADDRESS:**

2291 Old Gilliard Road  
Ridgeville, SC 29472

**LOCATION:**

From Charleston take I-26 to Ridgeville exit 187. Turn right on Highway 27 / Old Gilliard Road and drive approximately 5 miles. The property is on the left.





### PROPERTY HIGHLIGHTS:

- Almost 48 acres bordering Audubon Society's 18,000+ acre Beidler Forest.
- Private and quiet but still close to town.
- 40+ foot bluff overlooking the Four Hole Swamp.
- Mostly open field with two perk sites approved by DHEC.

### LEGAL DESCRIPTION:

TMS 115-00-00-016

### VIEW FULL LISTING:

[www.nationalland.com/viewlisting.php?listingid=2246674](http://www.nationalland.com/viewlisting.php?listingid=2246674)





