

**166 ACRES
ADJOINING
MARROWBONE
STATE FOREST WMA
166.561 +/- Acres
Metcalf County, KY
\$249,000**



Address:

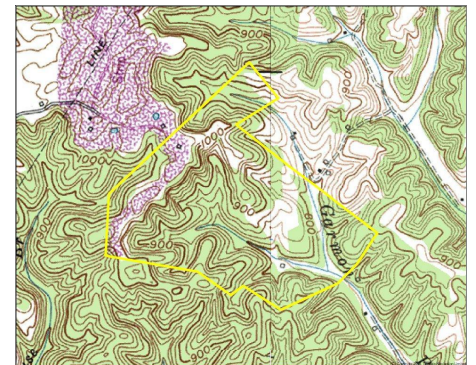
Gordon Branch Road
Edmonton, KY 42129

Location:

From the Junction of Hwy 68 and Hwy 163 in Edmonton, proceed south of Hwy 163 for 8.3 miles to Hwy 90. Turn left onto Hwy 90 and proceed for 4.6 miles to Gordon Branch Road. Turn left onto Gordon Branch Road and proceed for 1.0 miles to property entrance on left.

Property Highlights:

Adjoining the 1955 acres Marrowbone State Forest, this undeveloped property offers a lot of potential to any outdoor enthusiast. 166 acres with marketable timber, seasonal creeks, and long distance views. The ATV trails provide access through the farm and the moderately sloping terrain will allow for the expansion of more trails. There are multiple places to clear room for fields, food plots, or building sites. The cleared power lines can be utilized for grazing, food plots, or a long distance shooting range. Create your dream recreation farm with blank canvas.



View Full Listing Detail Here:

www.nationalland.com/viewlisting.php?listingid=1366788



National Land Realty
1609 Harmony Way
Bowling Green, KY 42103
www.NationalLand.com



Luke Biscan
Office: 855.384.5263
Cell: 270.404.4288
Fax: 864.331.1610
Lbiscan@nationalland.com