

**GREAT NORTH PORT  
LOT!  
<1 Acre  
Sarasota County, FL**

**SOLD**



**Address:**

ADELAIDE AVE  
North Port, FL 34288

**Location:**

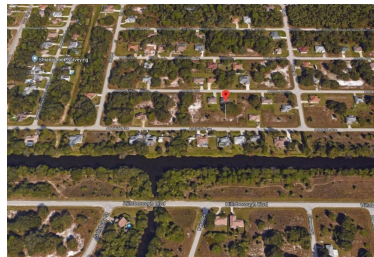
FROM S SAN MATEO DR, HEAD EAST  
ON ADELAIDE AVE TOWARD  
ALAMETOS TERRACE. LOT WILL BE  
ON THE LEFT.

**Property Highlights:**

Great lot for sale in North Port, Florida!  
Invest or build your dream home in this  
residential part of town! This lot is close to  
Port Charlotte, Charlotte Harbor, The  
World Famous Rotonda, beautiful  
beaches and the Gulf of Mexico. Close to  
golf courses, parks and schools, this lot  
offers something for everyone!

Listing provided by: Land Wealth Realty.

**Taxes:** \$370/year (2018)



**View Full Listing Detail Here:**

[www.nationalland.com/viewlisting.php?listingid=1355081](http://www.nationalland.com/viewlisting.php?listingid=1355081)



National Land Realty  
2180 West First St  
Unit 301  
Fort Myers, FL 33901  
[www.NationalLand.com](http://www.NationalLand.com)



**Justus Koester**  
Office: 855.384.5263  
Cell: 239.898.0163  
Fax: 239.541.8375  
[Jkoester@nationalland.com](mailto:Jkoester@nationalland.com)