

LARGE ROLLING TRACT WITH VIEWS

41.06 +/- Acres

Henderson County, NC

\$199,700



Address:

0 Homers Ln (41 +/- Acres)
Hendersonville, NC 28792

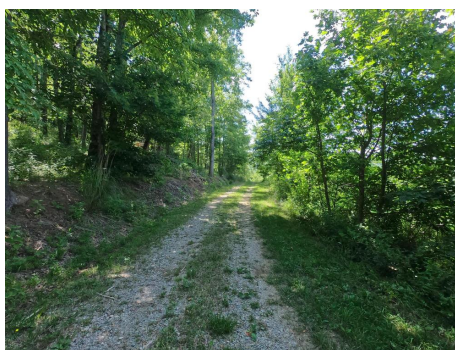
Location:

AWD/4WD Recommended. GPS can get you to Homers Ln. From Hendersonville, take US-64 E/Chimney Rock Rd to Gilliam Mountain Rd in Edneyville. Turn Right on Gilliam Mountain Rd. Follow that to the T intersection and turn Left on Sugarloaf Mountain Rd. In 1.7 miles turn Left on to Little Creek Rd. Continue 2 Miles on Little Creek Rd (It goes from pavement to gravel to poorly maintained dirt). Turn left on Homers Ln at the Log Cabin. Continue back Homers Ln to the end where there is a gated entrance and turn left. Property is the recently timbered brushy area.



Property Highlights:

Excellent value in this 41.06 surveyed acres of unrestricted rolling topography at less than \$5K/acre. Multiple ridges and a knoll provide many options for building sites, pasture, or growing. The land was clear cut and the regenerating forest is a protective haven for wildlife in the area. Deer, turkey, and small game enjoy the protective cover and abundance of food.



Taxes: \$1,266/year (2018)

View Full Listing Detail Here:

www.nationalland.com/viewlisting.php?listingid=1283503



National Land Realty
13 Lynnette Dr
Fairview, NC 28730
www.NationalLand.com



Pat Snyder
Office: 855.384.5263
Cell: 828.772.5899
Fax: 864.331.1610
Psnyder@nationalland.com